



GM Daily Overview | Grosvenor Operational Performance



Monday | 27 April 2020

**2**

Total Harm Free Days



Total TRC Free Days

**2**



**2,743**

LW Last 24hrs Tonnes

**467,527**

LW MTD Tonnes

Dev Last 24hrs Metres

**41.8**

Dev MTD Metres

**1,643.2**





Grosvenor | Total ROM Production Distribution (MOP vs. Actual)

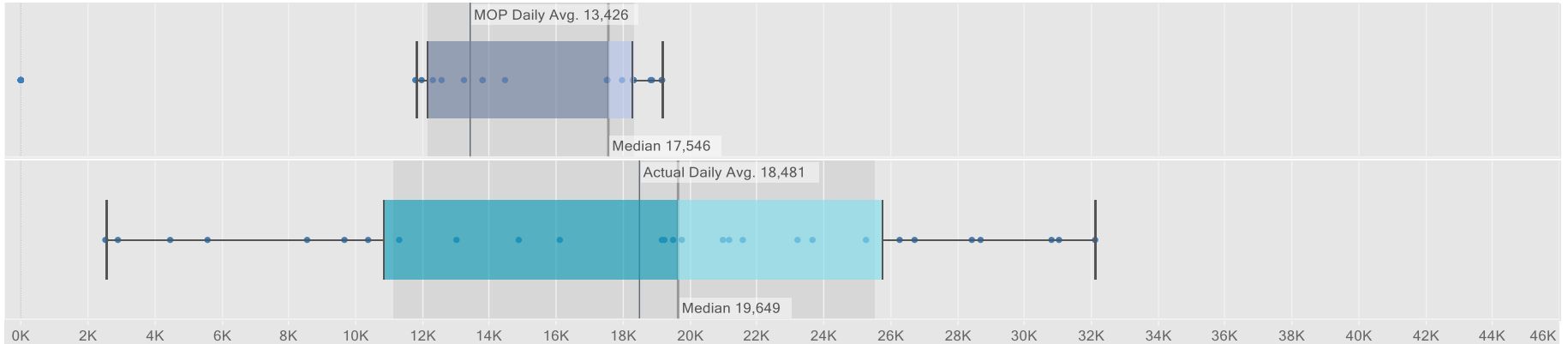


27 April 2020

Week 18

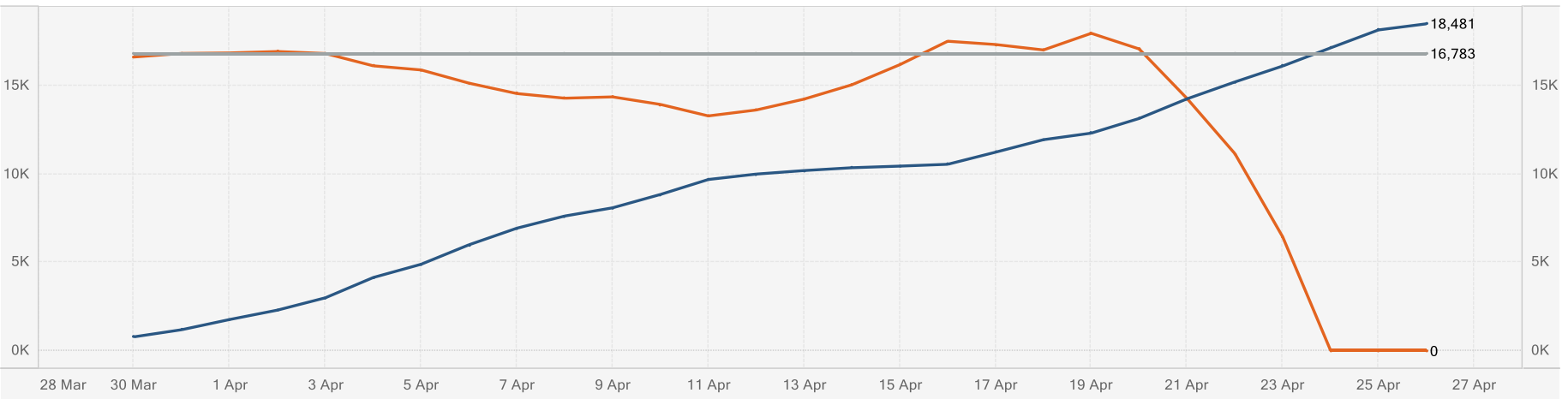
ROM MOP Last 24hrs  
**19,191**

ROM Actual Last 24hrs  
**4,132**



ROM Target (MOP)	ROM MTD (MOP)	ROM MTD (Actual)	ROM MTD (Variation)
<b>469,919</b>	<b>469,919</b>	<b>517,469</b>	<b>47,550</b>
ROM Daily Avg. Target (MOP)	ROM Daily Avg. MTD (MOP)	ROM Daily Avg. MTD (Actual)	ROM Daily Avg. Required (To Achieve MOP)
<b>16,783</b>	<b>16,783</b>	<b>18,481</b>	
2020EOY MOP ROM Target (Remaining)	ROM YTD (Actual)	ROM YTD Daily Avg. (MOP)	ROM YTD Daily Avg. (Actual)
<b>5,981,569</b>	<b>1,076,693</b>	<b>7,836</b>	<b>9,203</b>

■ ROM MOP Daily Avg. (Target)    
 ■ ROM MTD Daily Avg. (Actual)    
 ■ ROM Remaining Daily Avg. (Required)





Grosvenor | Total LW Production Distribution (MOP vs. Actual)

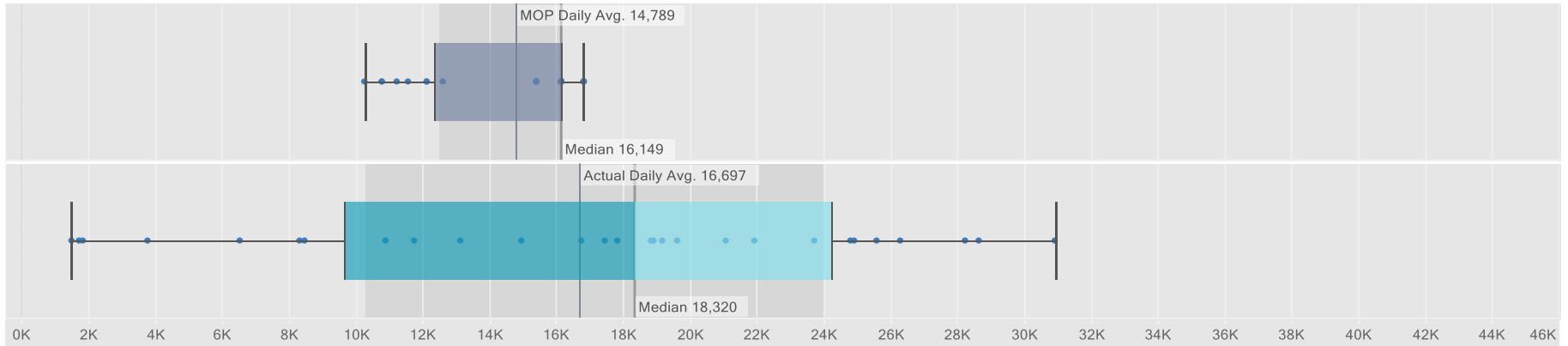


27 April 2020

Week 18

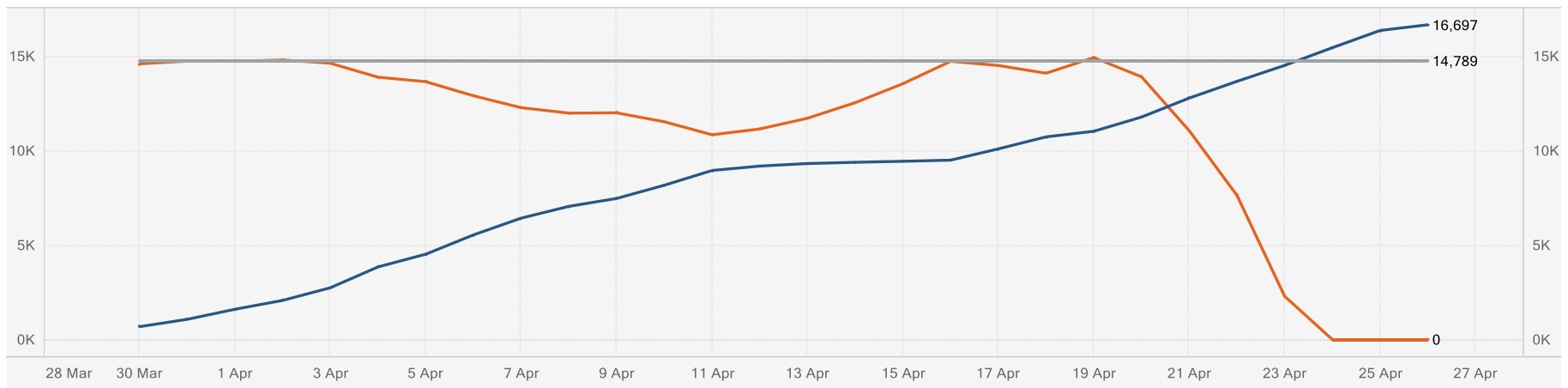
LW MOP Last 24hrs  
**16,816**

LW Actual Last 24hrs  
**2,743**



LW Target (MOP)	LW MTD (MOP)	LW MTD (Actual)	LW MTD (Variation)
<b>414,083</b>	<b>414,083</b>	<b>467,527</b>	<b>53,444</b>
LW Daily Avg. Target (MOP)	LW Daily Avg. MTD (MOP)	LW Daily Avg. MTD (Actual)	LW Daily Avg. Required (To Achieve MOP)
<b>14,789</b>	<b>14,789</b>	<b>16,697</b>	
LW YTD Target (MOP)	LW YTD (Actual)	LW YTD Daily Avg. (MOP)	LW YTD Daily Avg. (Actual)
<b>734,486</b>	<b>899,131</b>	<b>6,278</b>	<b>7,685</b>

■ LW MOP Daily Avg. (Target)    
 ■ LW MTD Daily Avg. (Actual)    
 ■ LW Remaining Daily Avg. (Required)





Grosvenor | Total Development Metres Distribution (MOP vs. Actual)

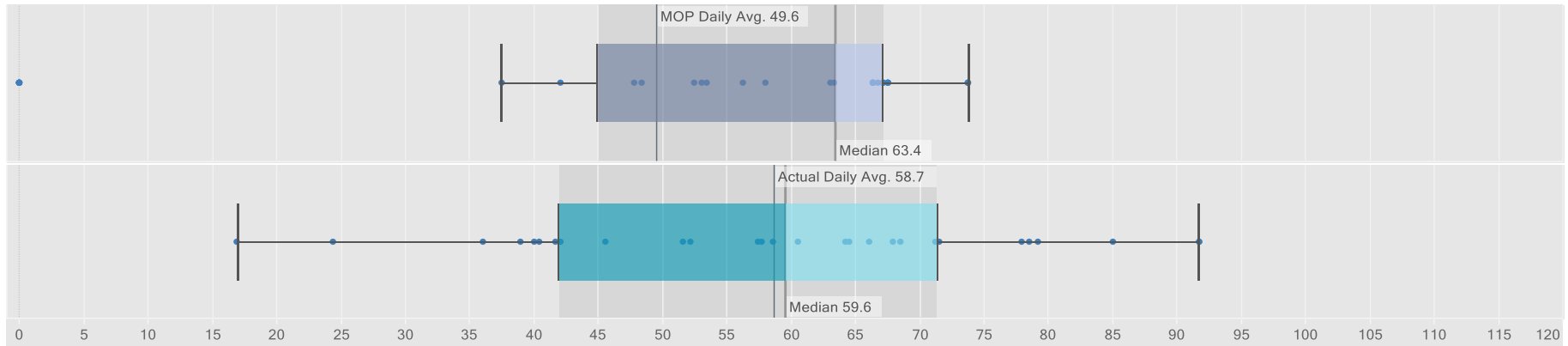


27 April 2020

Week 18

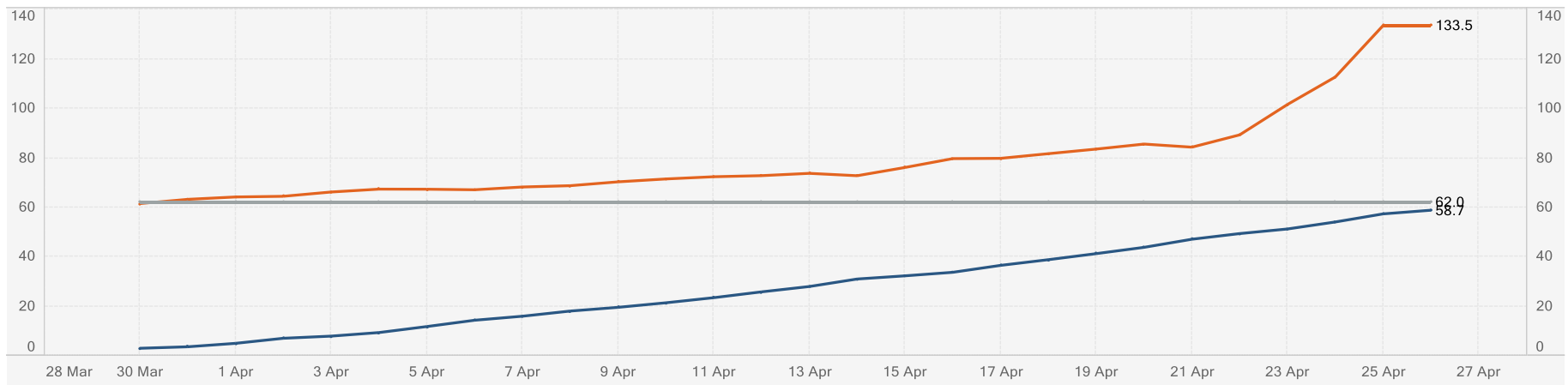
Dev MOP Last 24hrs  
**74.0**

Dev Actual Last 24hrs  
**42.0**



Dev Target (MOP)	Dev MTD (MOP)	Dev MTD (Actual)	Dev MTD (Variation)
<b>1,735</b>	<b>1,735.0</b>	<b>1,643.2</b>	<b>-91.8</b>
Dev Daily Avg. Target (MOP)	Dev Daily Avg. MTD (MOP)	Dev Daily Avg. MTD (Actual)	Dev Daily Avg. Required (To Achieve MOP)
<b>62.0</b>	<b>62.0</b>	<b>58.7</b>	
Dev YTD Target (MOP)	Dev YTD (Actual)	Dev YTD Daily Avg. (MOP)	Dev YTD Daily Avg. (Actual)
<b>5,675</b>	<b>5,597</b>	<b>48.5</b>	<b>47.8</b>

■ Dev MOP Daily Avg. (Target)    
 ■ Dev MTD Daily Avg. (Actual)    
 ■ Dev Remaining Daily Avg. (Required)





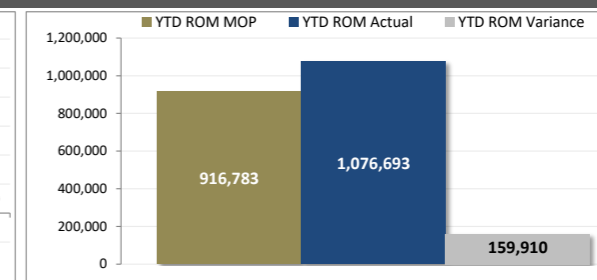
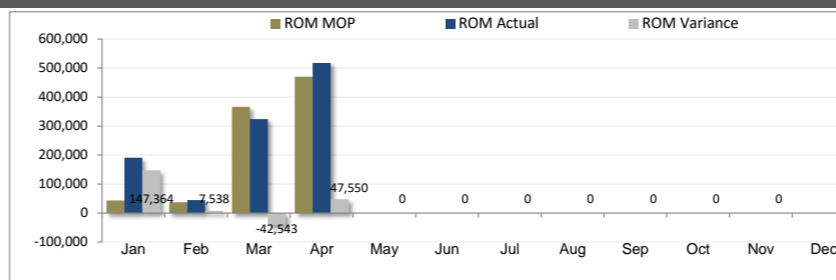
# Grosvenor | Production Forecast



Monday | 27 April 2020

2020 EOY MOP ROM Target	7,055,937
YTD ROM Tonnes	1,076,693
Remaining ROM To Achieve BP	5,979,244
Production Days Remaining	248
Daily ROM Requirement	24,110

Longwall t/sh - Forecast	2,010.02
PDRR104 Development t/m	31.44
105 Development t/m	32.08
106 Development t/m	32.54



ROM Total Tonnes			Development										Longwall					
Date Range	MOP	Actual	Metres		Tonnes		PDRR104		MG105		MG106		LW104 Tonnes		LW104 Shears		Operating Time	
			MOP	Actual	MOP	Actual	MOP	Actual	MOP	Actual	MOP	Actual	MOP	Actual	Shift Report	Citect		
Monday   30 Mar20	11,977.95	19,453.00	37.5	77.00	1,211.87	2,490.76	0.0	0.00	19.6	32.00	18.0	45.00	10,766.08	16,962.24	5.4	10.00	9.60	10.20
Tuesday   31 Mar20	17,966.92	9,176.00	56.3	16.00	1,817.81	514.19	0.0	0.00	29.4	14.00	26.9	2.00	16,149.12	8,661.81	8.0	4.40	5.40	4.30
Wednesday   01 Apr20	18,322.16	13,979.00	67.6	38.00	2,173.05	1,224.34	11.3	6.00	29.4	12.00	26.9	20.00	16,149.12	12,754.66	8.0	6.40	8.50	8.10
Thursday   02 Apr20	13,830.43	12,731.00	53.5	56.50	1,718.60	1,809.88	11.3	18.00	22.0	19.00	20.2	19.50	12,111.84	10,921.12	6.0	6.20	10.60	9.90
Friday   03 Apr20	18,322.16	17,361.00	67.6	23.50	2,173.05	756.16	11.3	0.00	29.4	18.50	26.9	5.00	16,149.12	16,604.84	8.0	10.00	10.10	10.50
Saturday   04 Apr20	18,322.16	29,973.00	67.6	39.50	2,173.05	1,261.36	11.3	9.00	29.4	30.50	26.9	0.00	16,149.12	28,711.64	8.0	16.20	14.60	14.40
Sunday   05 Apr20	18,322.16	18,839.00	67.6	67.00	2,173.05	2,135.93	11.3	33.00	29.4	17.00	26.9	17.00	16,149.12	16,703.07	8.0	9.80	8.40	8.90
Sur Adj		15,096.0		6.70		-404.62		-11.70		2.50		15.90		15,500.62		-4.00	0.00	0.20
<b>TOTAL WEEK 14</b>	<b>117,063.95</b>	<b>136,608.00</b>	<b>417.6</b>	<b>324.20</b>	<b>13,440.46</b>	<b>9,788.00</b>	<b>56.50</b>	<b>54.30</b>	<b>188.4</b>	<b>145.50</b>	<b>172.77</b>	<b>124.40</b>	<b>103,623.49</b>	<b>126,820.00</b>	<b>51.55</b>	<b>59.00</b>	<b>67.20</b>	<b>66.50</b>
Monday   06 Apr20	11,811.72	29,493.00	47.9	73.00	1,538.10	2,319.70	10.9	38.00	16.5	30.00	20.5	5.00	10,273.62	27,173.30	5.1	15.00	13.10	13.00
Tuesday   07 Apr20	17,546.25	24,937.00	66.4	47.00	2,135.82	1,508.61	10.9	11.50	24.7	17.50	30.7	18.00	15,410.43	23,428.39	7.7	13.00	11.50	12.10
Wednesday   08 Apr20	17,546.25	17,921.00	66.4	60.00	2,135.82	1,941.42	10.9	5.50	24.7	10.50	30.7	44.00	15,410.43	15,979.58	7.7	9.00	9.70	8.90
Thursday   09 Apr20	13,245.35	11,670.00	52.5	43.50	1,687.53	1,404.08	10.9	3.00	18.6	17.50	23.0	23.00	11,557.82	10,265.92	5.8	6.00	6.60	6.40
Friday   10 Apr20	17,546.25	19,830.00	66.4	53.00	2,135.82	1,699.94	10.9	14.00	24.7	20.00	30.7	19.00	15,410.43	18,130.06	7.7	12.00	12.30	12.20
Saturday   11 Apr20	17,546.25	22,324.00	66.4	59.20	2,135.82	1,896.90	10.9	22.00	24.7	11.20	30.7	26.00	15,410.43	20,427.10	7.7	11.00	11.30	11.10
Sunday   12 Apr20	17,546.25	7,225.00	66.4	67.50	2,135.82	2,166.65	10.9	18.00	24.7	21.50	30.7	28.00	15,410.43	5,058.35	7.7	3.00	3.10	3.10
SurAdj		9,427.00		-9.90		-976.29		2.70		-9.70		-2.90		10,403.29		-4.30	0.00	0.30
<b>TOTAL WEEK 15</b>	<b>112,788.32</b>	<b>142,827.00</b>	<b>432.2</b>	<b>393.30</b>	<b>13,904.75</b>	<b>11,961.00</b>	<b>76.30</b>	<b>114.70</b>	<b>158.7</b>	<b>118.50</b>	<b>197.13</b>	<b>160.10</b>	<b>98,883.56</b>	<b>130,866.00</b>	<b>49.20</b>	<b>64.70</b>	<b>67.60</b>	<b>67.10</b>
Monday   13 Apr20	12,327.38	4,215.00	48.5	60.50	1,556.11	1,940.35	11.1	20.00	18.3	13.50	19.1	27.00	10,771.27	2,274.65	5.4	1.40	1.30	3.00
Tuesday   14 Apr20	18,316.59	3,093.00	67.1	85.00	2,159.68	2,733.36	11.1	19.00	27.4	25.00	28.7	41.00	16,156.91	359.64	8.0	0.00	0.60	1.00
Wednesday   15 Apr20	18,316.59	1,154.86	67.1	36.00	2,159.68	1,154.86	11.1	0.00	27.4	36.00	28.7	0.00	16,156.91	0.00	8.0	0.00	1.30	2.40
Thursday   16 Apr20	13,824.68	1,516.00	53.1	40.00	1,707.00	1,289.37	11.1	0.00	20.5	26.50	21.5	13.50	12,117.68	226.63	6.0	0.00	0.00	0.00
Friday   17 Apr20	18,316.59	17,783.00	67.1	78.50	2,159.68	2,525.62	11.1	11.00	27.4	36.00	28.7	31.50	16,156.91	15,257.38	8.0	8.60	10.20	10.20
Saturday   18 Apr20	18,316.59	18,395.00	67.1	64.50	2,159.68	2,061.51	11.1	19.00	27.4	35.50	28.7	10.00	16,156.91	16,333.49	8.0	8.00	11.80	11.30
Sunday   19 Apr20	18,307.16	9,018.00	66.8	68.50	2,150.25	2,194.83	10.8	15.50	27.4	37.00	28.7	16.00	16,156.91	6,823.17	8.0	3.60	5.40	6.50
SurAdj		9,696.14		0.40		-717.91		-0.10		-2.30		2.80		10,415.05		1.20		0.20
<b>TOTAL WEEK 16</b>	<b>117,725.57</b>	<b>64,871.00</b>	<b>437.0</b>	<b>433.40</b>	<b>14,052.10</b>	<b>13,182.00</b>	<b>77.40</b>	<b>84.40</b>	<b>175.7</b>	<b>207.20</b>	<b>183.85</b>	<b>141.80</b>	<b>103,673.48</b>	<b>51,690.00</b>	<b>51.58</b>	<b>22.80</b>	<b>30.60</b>	<b>34.60</b>
Monday   20 Apr20	12,570.03	17,710.00	42.1	73.00	1,359.42	2,343.96	0.0	14.50	21.6	33.50	20.5	25.00	11,210.61	15,366.04	5.6	9.20	10.80	10.10
Tuesday   21 Apr20	18,855.04	25,524.00	63.1	93.50	2,039.13	3,012.04	0.0	17.50	32.4	24.00	30.7	52.00	16,815.92	22,511.96	8.4	12.00	10.50	10.80
Wednesday   22 Apr20	18,864.48	21,201.00	63.4	66.00	2,048.56	2,123.57	0.3	13.00	32.4	21.00	30.7	32.00	16,815.92	19,077.43	8.4	10.00	10.30	10.00
Thursday   23 Apr20	14,477.66	19,739.00	58.0	54.00	1,865.73	1,735.09	10.7	13.50	24.3	15.50	23.0	25.00	12,611.94	18,003.91	6.3	10.00	11.20	10.80
Friday   24 Apr20	19,191.42	23,175.00	73.8	81.00	2,375.51	2,609.72	10.7	16.00	32.4	18.00	30.7	47.00	16,815.92	20,565.28	8.4	11.60	13.20	13.60
Saturday   25 Apr20	19,191.42	22,886.00	73.8	93.50	2,375.51	3,009.15	10.7	22.00	32.4	19.50	30.7	52.00	16,815.92	19,876.85	8.4	9.80	11.10	11.20
Sunday   26 Apr20	19,191.42	4,132.00	73.8	43.50	2,375.51	1,389.08	10.7	18.50	32.4	13.00	30.7	12.00	16,815.92	2,742.92	8.4	2.00	2.40	2.30
SurAdj		38,796.00		-12.20		-1,210.62		0.50		-10.20		-3.00		40,006.62		-8.90	-0.10	0.30
<b>TOTAL WEEK 17</b>	<b>122,341.49</b>	<b>173,163.00</b>	<b>448.2</b>	<b>492.30</b>	<b>14,439.36</b>	<b>15,012.00</b>	<b>43.10</b>	<b>115.50</b>	<b>207.9</b>	<b>134.30</b>	<b>197.11</b>	<b>242.00</b>	<b>107,902.12</b>	<b>158,151.00</b>	<b>53.68</b>	<b>55.70</b>	<b>69.40</b>	<b>69.10</b>
MTD F/Cast vs. Actual	469,919.33	517,469.00	1,734.91	1,643.20	55,836.68	49,942.99	253.30	368.90	730.75	605.50	750.86	668.30	414,082.65	467,527.01	206.01	202.20		
MTD Var to F/Cast	47,550	110.1%	-91.71	94.7%	-5,894	89.4%	115.60	145.6%	-125.25	82.9%	-82.56	89.0%	53,444.35	112.9%	-3.81	98.2%		
Month Total Forecast	<b>469,919</b>		<b>1,735</b>		<b>55,837</b>		<b>253</b>		<b>731</b>		<b>751</b>		<b>414,083</b>		<b>206.0</b>			
MOP03	469,919	517,469	1,735	1,643.2	55,837	49,943.0	253	368.9	731	605.5	751	668.3	414,083	467,527	206	202		
Var to MOP	47,550	110.1%	(91.6)	94.7%	(5,894.0)	0.0%	115.7	145.7%	(125.2)	82.9%	(82.6)	89.0%	53,444	112.9%	-4	98.2%		
Business Plan 19MOP10	454,275	517,469	2,148	1,643.2	66,973	49,943.0	613	368.9	807	605.5	728	668.3	387,302	467,527	191	202		
Var to BP	63,194	113.9%	(504.8)	76.5%	(17,030.0)	0.0%	(244.1)	60.2%	(201.5)	75.0%	(59.7)	91.8%	80,225	120.7%	11	105.9%		