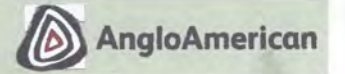


Grosvenor Longwall Production and Maintenance Control



Date:	3/5/20	Day:	M	T	W	T	F	S	(S)
Panel:	MG 10A	Crew:	(A)	B	C	D	E	F	
ERZC:	Adam Maggs	Shift:	D	(A)	N				

	SOS	EOS	Vehicle	C/T	Vehicle	C/T	Manning	
Creep	+100	-100					Op.	Elec. Jackson
Shearer Pos	55	55					Op.	Elec. Matt
MG Chainage	4000	4000					Op.	Mech. Josh
TG Chainage	3999	3999					Op.	Mech. Tommy
Lead TG to MG							Op.	

Face / Panel Conditions:

Face Conditions Satisfactory, Face Slabbing in Areas Cavities on face 107-115, 121-122, 129-130, 147-149.
 2x Faults on face 105-107 2.5m Downthrow 139 600mm ↑
 Tailgate Roadway beside Carport Very Heavy around Support Pumping PUR on face 124-97 ↑
 Exclusion zones in Place for Pumping

Safety

ACOM & SLAMS.

SLAMs	13	VFLs	9	POPs	0
-------	----	------	---	------	---

Production and Delay Report

Start	Finish	Cut Time	Maint. Delay	Operat'l Delay	Delay Description	Corrective Action Taken	Equip. Code	Delay Code
9:30	9:40			10	SOS Meeting		1770	00
9:40	10:20			40	travel.		1880	00
10:20	10:30			10	ACOM & Crewtalk.		1770	00
10:30					Pumping PUR on face from 124-97#			
					Reclaimed Retick cable from 37-38cjt B Adg.			
				600	Housekeeping around 34-35cjt. ix operator on LHD.			
					Electricians fixing WI-FI			
8:30	9:30			60	Changeover & travel.		1770	00
Totals				720	# Shears - # Fly Cuts -	Alignment OK	Horizon OK, still fault drainage so grading as needed	

Hot Seat	Production and Maintenance KPIs			Mining WOs vs. Plan	
Yes / No	Plan	Actual	Variance	3	vs. 3
Did you: TTFC		No		Mech. WOs vs. Plan	
Use Auto? TTLC				2	vs. 2
Yes / No Cutting Time				Elect. WOs vs. Plan	
Dust Checks No. of Shears				1	vs. 2
Complete? Mins/Shear				Cont'gency WOs vs. Plan	
Yes / No Maint. Time				-	vs. -

Production

Other Tasks / Additional Work:

Retrieved Retick Cable from 37-38 B Adg

Supplies Required:

Outgoing ERZC:		Incoming ERZC:	
		Under Manager:	

Face Status	Maingate	No. 40 Chock	No. 80 Chock	No. 120 Chock	Tailgate
<input type="checkbox"/> Cut Height <input type="checkbox"/> Pan Angle	3.6	4.2	4.2	4.2	4.2

Day	M	T	W	T	F	S	S
Shift	W	①	N				
Crew	A	B	C	D	②	F	

GROSVENOR MINE
Production Control Development

ERZC & LEADING HAND: **ROB ELLERY**

PANEL: **104 PDRR**

DATE: **3 / 5 / 20**

25455

Contraband:	NIL.			
Support Code:	GREEN.			
KPI's	Plan	Actual	Variance	
TTFC				
TTLC				
Uptime				
Metres				
Metres/hour				
Work Orders Completed				
Electrical		of		
Mechanical		of		
Operational		of		

Equipment & Location		
No.	Fuel %	Location
Eimco: LDL 08		
Eimco: 3101		
Eimco:		
Drifty: CNM02		
Drifty:		
Pod Racker: QDL 49		X DRIVE
Mesh Jib: QDL 85		20 B-3C
Bucket:		19-20 B
Forks:		
Pipe Trailer:		
Man Basket: QDL 184		DRIVE HEAD

Critical Supplies	Location	% Remaining
1200 Chem		
1400 Chem		
Full Bolt Pods		
Mesh Pod		
Tensar Mesh	X DRIVE	
Hydraulic Oil		
Mega Bolt Pod	X DRIVE	3 PACKS
Pipe Hanging Brackets		
Escape Way Signs		
Spare Vent Tubes		
Borehole Kit		
Empty Bin	B 20-21	

Manning	
Miner Driver:	LONGY
Bolters:	SANDY, STURDY, SULLY
Shuttle Car:	
Outbye:	Mechanical: MAU + MATT + MATT M?
Trainee:	PAT (APPRENTICE ELECT) Absent: Electrical: Tom, ADAN

	Mining Height	Tonstein to Floor RHS	Laser to Rib	
			L	R
SOS				
EOS				
	Hdg	C/T Ref	Chainage	SEQ
SOS				
EOS				

Was Heading Dusted?	Yes	③
Was Road Scooped?	Yes	④
Was Miner Supplied?	Yes	No

Critical information to pass on:

START	FINISH	METRES PLAN/ACTUAL	UPTIME	PRODUCTION DELAYS				Remember - Log the primary cause of delay...Why are we not cutting?	
				DOWNTIME	ACTIVITY CODE	DELAY CODE	PLANT & EQUIP CODE	REASON FOR VARIANCE	ACTION TAKEN/REQUIRED
0600	0610			10	1770	0D		UM PRE-SHIFT MEETING.	
0610	0630			20	1840	0D		TRAVEL TO DISTRICT.	
0630	0645			15	1770	0D		PRE-SHIFT MEETING INCLUDING ACOM.	
645								- TRAVEL TO FACE	
								- SET UP GROUT POD + GROUT 28 MEGAS TO BACK OF CM. (COMPLETED 0845hr)	
								- SUPPLY QDS BOLTER, HANG X 4 SHEETS RIB MESH IN TG CHUTE BEHIND HOSE REELER. BOLTED RIB (X 20 BOLTS) (COMPLETED 0900hr)	
				315				- REMOVE STEEL 6FT BOLTS FROM NEW BOLT POD & REPLACE WITH CUTTABLES CHANGE OUT BOLT PODS	
								- MEGA BOLTS TO FACE.	
	1200							- ROLL UP HOSES ON 2nd HOSE REELER IN MA CHUTE	
1200								- RE-FUEL LDL 08	
	1300			60				CRIBBO	
1300								* X 1 OPERATOR RUNNING SUPPLIES.	
								- RE-FILL MESH TRAILER, BOLT POD & GROUT POD.	
								- 2nd MESH TRAILER LOADED & ON SURFACE.	
			255					- MT BOLT POD TAKEN TO SURFACE & RE-LOADED.	
								* X 3 OPERATORS TO MAINS BOLTING B 34hr O/CAST.	
								- BOLTED X 1 ROOF SHEET, PINNED 1 RIB MESH EACH SIDE	
								- INSTALLED 4 MEGA BOLTS (NOT PLATED OR TENSIONED)	
								NOTE:- LEFT QDS BOLTER ON JOB MAINS B 34hr.	
								- RE-FUELLED LDL 3101 & DROPPED OFF TO PDRR	
1715	1800			45				TRAVEL + SHOWERS.	
Work & Stat issue req attention:									
Totals		Metres	Uptime	Downtime	ERZC/Leading Hand:		Oncoming ERZC/Leading Hand:		
					Undermanager:		Process Coordinator:		

Day	M	T	W	T	F	S	(S)
Shift	W	(D)	N				
Crew	(A)	B	C	D	E	F	

GROSVENOR MINE
Production Control Development

ERZC & LEADING HAND: BOYD BUSCHMANN
PANEL: PRR 104

DATE: 3 / 5 / 20

25456

	Mining Height	Tonstein to Floor RHS	Laser to Rib	
			L	R
SOS	3.7	1.8		C
EOS	3.7	1.8		C
	Hdg	C/T Ref	Chainage	SEQ
SOS	PRR	104	30.5	2
EOS	"	"	43.0	"
Was Heading Dusted?			(Yes)	No
Was Road Scooped?			(Yes)	No
Was Miner Supplied?			(Yes)	No

Contraband:			
Support Code:	<u>GREEN</u>		
KPI's	Plan	Actual	Variance
TTFC	1030	1045	-15
TTLT	2045	2045	NW
Uptime	480	575	+95
Metres	10	12.5	+2.5
Metres/hour			
Work Orders Completed			
Electrical	1	of	1
Mechanical	1	of	1
Operational		of	

Equipment & Location			
	No.	Fuel %	Location
Eimco:	LDLOB		
Eimco:	3101		
Eimco:			
Drifty:	CMM02		
Drifty:			
Pod Racker:			
Mesh Jib:			20B-A
Bucket:			LHD
Forks:			?
Pipe Trailer:			?
Man Basket:			BEST CHAMPION

Critical Supplies		
	Location	% Remaining
1200 Chem	21B-A	80%
1400 Chem	"	"
Full Bolt Pods	20B-A	
Mesh Pod	M4 CHUTE	
Tensor Mesh	"	
Hydraulic Oil	B 24-22	
Mega Bolt Pod	CHUTE off	50%
Pipe Hanging Brackets	-	
Escape Way Signs		
Spare Vent Tubes	DLB	
Borehole Kit	B20-19	
Empty Bin	20B-A	

Manning	
Miner Driver:	D. CHEESEMAN
Bolters:	S. COWAN, M. BALDWIN, B. LACY
Shuttle Car:	S. BERRIGAN, D. BOYNTON
Mechanical:	S. CHANDLER
Outbye:	G. MARTIN, D. BURTON
Electrical:	R. DUN
Trainee:	
Absent:	

Critical information to pass on:
 * NEED FORKS IN PANEL + REPAIRS CHEMICALS
 * OUTBYE USING OUR FUNGER DUSTER TONIGHT TO TREAT FAILED ZONES HAVE TOLD THEM TO GET IT ONCE WE HAVE HIT THE S.I.S. BOREHOLE OR DUSTED AGAIN @ CH 44m → WILL COME SEE YOU LATER U.P.

START	FINISH	METRES PLAN/ACTUAL	UPTIME	PRODUCTION DELAYS			REASON FOR VARIANCE	ACTION TAKEN/REQUIRED	Remember - Log the primary cause of delay...Why are we not cutting?	Other Works Completed/During Delay
				DOWNTIME	ACTIVITY CODE	DELAY CODE				
930	940			10	OD	1770	S.O.S. SAFETY MEETING WITH UNDERMANAGER			
940	1000			20	OD	1840	TRAVEL			
1000	1015			15	OD	1770	REVIEW TOOLBOX TALK + SHIFT PLAN + A-COM			
1015	1045			45	ALL	1560	TRAVEL TO FACE + PRE-SHOTS / SHAMS + F.I. CHECKS			
1200	1205			5	OD	1350	STONE DUST TAKE / BIN CHECKS			- LOADED MESH JIB - ISOLATED FEEDER AND CLEANED OUT DEBRIS AROUND BREAKER DRUM. - CHANGED DAM FILTERS ON LDLOB + 3101 - HOUSEKEEPING AT AUX FAN
1450	1500			10	OD	6740	INSTALL TELLTALE @ CH 35m			- BERNIE BAGS INTO CANCKE / RUIS IN WHEELING ROAD BETWEEN CHUTE off AND PRR → SMALL SPRING IN FLOOR LHS. * 1/2 PALLET BERNIE BAGS STORED IN X-DUNE TOWARDS TEL104 IN SKINNY DUCKS BULL. - MUCKING OUT STORAGE / MUCK IN X-DUNE TOWARDS M/G CHUTE BETWEEN SCARS + BUILDING ROAD IN WITH LARGE PAULST. - CLEANED FOOTEND → MUCKED OUT WITH LHD - 30X STONE DUST BAGS TO AUX FAN
							* ROOF MESH onto c/m BETWEEN SCARS			
							* MELABOLTS TO FACE BETWEEN CARPS IN CHEMICALS			
2045	2130			45	OD	1840	HANDOVER + TRAVEL + DE-BRIEF.			
Totals		Metres	Uptime	Downtime	ERZC/Leading Hand:		Oncoming ERZC/Leading Hand:	Work & Stat issue req attention:		
		12.5	575	145						
		Undermanager:		Process Coordinator:						

Day	M	T	W	T	F	S	S
Shift	W	D	N				
Crew	A	B	C	D	E	F	

GROSVENOR MINE
Production Control Development

ERZC & LEADING HAND: *M. PRATT*
 PANEL: *105*

DATE: *3, 5, 20*

28520

Contraband: *NIL FOUND*

Support Code:			
KPI's	Plan	Actual	Variance
TTFC	<i>700</i>	<i>700</i>	<i>0</i>
TTLC	<i>1715</i>	<i>1715</i>	<i>0</i>
Uptime			
Metres			
Metres/hour			
Work Orders Completed			
Electrical		of	
Mechanical		of	
Operational		of	

Equipment & Location		
No.	Fuel %	Location
Eimco:	<i>1</i>	<i>100</i>
Eimco:	<i>3104</i>	<i>SURFACE</i>
Eimco:		
Drifty:		
Drifty:		
Pod Racker:		
Mesh Jib:		
Bucket:		
Forks:		
Pipe Trailer:		
Man Basket:	<i>28ck</i>	

Critical Supplies	Location	% Remaining
1200 Chem	<i>31ck</i>	
1400 Chem	<i>31ck</i>	
Full Bolt Pods		
Mesh Pod		
Tensar Mesh	<i>29ck @ 31ck</i>	
Hydraulic Oil	<i>31-32</i>	
Mega Bolt Pod	<i>31-32</i>	<i>30-31</i>
Pipe Hanging Brackets	<i>31-32</i>	
Escape Way Signs		
Spare Vent Tubes		
Borehole Kit		
Empty Bin		

Manning	
Miner Driver:	<i>D. POPE</i>
Bolters:	<i>P. TOOMBY, N. KOCH</i>
Shuttle Car:	
Outbye:	Mechanical: <i>J. PAUL, N. GANHAM</i>
Trainee:	Electrical: <i>P. DOWD, D. FIELDS</i>
	Absent:

Critical information to pass on:
FUEL POD TAKEN TO SURFACE FROM 12 CK
STEEL/PLASTIC BOLT POD FULL @ 29ck
LIMIT RUBBISH DUCKS BIK @ 9ck.

	Mining Height	Tonstein to Floor RHS	Laser to Rib	
			L	R
SOS				
EOS				
	Hdg	C/T Ref	Chainage	SEQ
SOS	<i>B</i>	<i>32-33</i>	<i>75</i>	<i>2</i>
EOS				
Was Heading Dusted?			Yes <input checked="" type="checkbox"/>	No <input type="checkbox"/>
Was Road Scooped?	<i>Boof</i>		Yes <input checked="" type="checkbox"/>	No <input type="checkbox"/>
Was Miner Supplied?			Yes <input checked="" type="checkbox"/>	No <input type="checkbox"/>

START	FINISH	METRES PLAN/ACTUAL	UPTIME	PRODUCTION DELAYS				Remember - Log the primary cause of delay...Why are we not cutting?	
				DOWNTIME	ACTIVITY CODE	DELAY CODE	PLANT & EQUIP CODE	REASON FOR VARIANCE	ACTION TAKEN/REQUIRED
<i>600</i>				<i>20</i>				<i>U/M BRIEFING</i>	
				<i>20</i>				<i>TRAVEL</i>	
				<i>20</i>				<i>A.COM. TBT, SHIFT PLAN</i>	
<i>700</i>								<i>PRODUCTION READINESS</i>	<i>LAD 3104 BROUGHT DOWN WITH M/BOLT POD</i>
								<i>- SCOP BOOTEND</i>	<i>- SURVEYORS DOWN MID PILLAR SITES B/H + MBLING CHECK CHG</i>
								<i>- GROUT BEHIND U/M x 22 BOLTS</i>	<i>- C.N.C. SETTING UP FOR SHOTCRETE CHG</i>
<i>800</i>								<i>- MECH / ELEC ANALYS</i>	
								<i>- GAS CHG B/H C/M</i>	<i>- ELEC REPLACE COMMS CABLES IN C/M IN B/H FOR "JNA" DISPLAY</i>
<i>900</i>								<i>- RACK PODS, SUPPLY C/M</i>	
<i>1000</i>									
<i>1100</i>				<i>60</i>				<i>CMB</i>	
<i>1200</i>								<i>FRAMES TO SURFACE WORKS</i>	
<i>1300</i>								<i>- LOAD HIT CABLE ON REELER LEFT @ 6ck</i>	
<i>1400</i>								<i>- LOAD A-FRAME BACK ON BEY @ 2ck</i>	<i>- RUBBISH RUN IN PANEL DUST BAGS FROM TRUCKS DUSTERS</i>
<i>1500</i>								<i>- 2 x PALLETS SIDUST @ 31ck</i>	<i>- LOC OF FUELED CP</i>
<i>1600</i>								<i>- READWORKS IN B/H IN BYE CYBROOM</i>	<i>- LOC 3104 TAKEN TO SURFACE WITH FUEL POD FROM 12ck</i>
<i>1700</i>				<i>30</i>				<i>- TRAVEL / HANDOVER</i>	Work & Stat issue req attention: <i>* NEED TO MONITOR C-B/H 32ck T/TAL @ 28mm, CREST Spm LAST 2.9 HAS</i>
<i>1800</i>									
Totals									

ERZC/Leading Hand: *[Redacted]*
 Undermanager: *[Redacted]*

Oncoming ERZC/Leading Hand:
 Process Coordinator:

Day	M	T	W	T	F	S	(S)
Shift	W	(D)	N				
Crew	(A)	B	C	D	E	F	

GROSVENOR MINE
Production Control Development

ERZC & LEADING HAND: *Paul Ilem*
PANEL: *MB105* DATE: *3 / 5 / 20*

28521

	Mining Height	Tonstein to Floor RHS	Laser to Rib	
			L	R
SOS	3-8	1-3	2-7	2-7
EOS	3-8	1-3	2-7	2-7
	Hdg	C/T Ref	Chainage	SEQ
SOS	B	32	75	2
EOS	B	32	100	2

Contraband: *None Found*

Support Code: *Revised*

KPI's	Plan	Actual	Variance
TTFC	1030	1030	
TTLIC	245	2045	
Uptime	480	540	
Metres	20	25	
Metres/hour			

Work Orders Completed

Category	Count	of	Total
Electrical	1	of	1
Mechanical	1	of	1
Operational	1	of	1

Equipment & Location	Equipment & Location	
	No.	Fuel %
Eimco:	01	Pass
Eimco:	304	SXP
Eimco:		
Drifty:	14	Pass
Drifty:		
Pod Racker:		Pass
Mesh Jib:		"
Bucket:		"
Forks:		"
Pipe Trailer:		"
Man Basket:		"

Critical Supplies	Location	% Remaining
1200 Chem	24ct + 31ct	
1400 Chem	"	
Full Bolt Pods	25ct	
Mesh Pod	17+22ct	
Tensar Mesh	31ct	
Hydraulic Oil	B31-32	
Mega Bolt Pod	"	
Pipe Hanging Brackets		
Escape Way Signs	"	
Spare Vent Tubes	"	
Borehole Kit	"	
Empty Bin		

Manning	
Miner Driver:	B SMITH
Bolters:	C MATTHEWS, J. WILSON, J. SMITH
Shuttle Car:	C. GRANLEY
Outbye:	L SIMS
Trainee:	
Mechanical:	S. PIERCE
Electrical:	L. VORISEK
Absent:	

Critical information to pass on:
*SIGHTS ADVANCED MID PILLAR 60MM OUT.
 ADVANCE USE TO NEW SIGHTS.
 - REQUIRES BOAT POD, MEGA BOLTS, TENSAR MESH, VENT CHAIN, PIPE BRACKETS, CABLE POWERS*

START	FINISH	METRES PLAN/ACTUAL	UPTIME	PRODUCTION DELAYS				REASON FOR VARIANCE	ACTION TAKEN/REQUIRED	Remember - Log the primary cause of delay... Why are we not cutting?	
				DOWNTIME	ACTIVITY CODE	DELAY CODE	PLANT & EQUIP CODE				
0930	0945			15	OD	1770		PRE-SHIFT MEETING.	* 24ct STGA/PLASTIC x 2	- C. MATTHEWS LEFT EARLY FOR TRAINING ON MONDAY 4/5/20.	
0945	1015			30	OD	1840		TRAVEL	& 1200, 1400 MCA. BATTERIES		
1015	1030			15	OD	1770		SHFT NOTES, ACOM, TBTS	2x ROLL CHAIN.		
1030	1130		60						* FUEL POD FULL*	- Supplies TO FACES	
1130	1130		20							- VENT TUBES TO FACES.	
1130	1200		30	10	ED	4010		CV001 OFF -		- RIB MESH TO FACES	
1200	1230		30							- SCOOP CONTINUED CLM	
1230	1330		60							- LOAD ROOF MESH ON CLM	
1330	1430		60							- LOAD ROOF MESH JIB	
1430	1530		60							- VENT TUBES TO FACES	
1530	1540									- RIB MESH TO FACES	
1540	1630		50	10	OD	1350		STRONG DUST FACES		- SHUT CRIBS	
1630	1730		60							- SCOOP WASHING ROAD.	
1730	1755		25								
1755	1805		25	10	OD	6690		PUR CLM BACK & CLEAN UP RIB SPACE			
1805	1830		25								
1830	1930		60								
1930	1935		5								
1935	2010		20	35	OD	6690		PUR CLM BACK & CLEAN UP RIB SPACE			
2010	2030		20								
2030	2035		5								
2035	2045			10	OD	1350		STRONG DUST FACES.		Work & Stat issue req attention: * CHIP NO 3, NEXT CHIP NO? (INBYE) & CHIP 8 SEPARATED ON NEWS RESOURCES INSPECTION. * BOREHOLES IN CHDG RESOURCES CLEAR PIVOTS	
2045	2130			45	OD	1840		TRAVEL/HANDOVER			
Totals		Metres	Uptime	Downtime	ERZC/Leading Hand		Oncoming ERZC/Leading Hand:				
		25	540	180							
		Undermanager:		Process Coordinator:							

Day	M	T	W	T	F	S	(S)
Shift	W	(D)	N				
Crew	(A)	B	C	D	E	F	

GROSVENOR MINE
Production Control Development

ERZC & LEADING HAND: C EDE

PANEL: 106

DATE: 3/5/20

26152

Contraband:	NIL		
Support Code:	20660	20669	
KPI's	Plan	Actual	Variance
TTFC	1030	1020	
TTL	2045	1655	
Uptime	480	375	
Metres	15	14	
Metres/hour			
Work Orders Completed			
Electrical	1	of	1
Mechanical	1	of	1
Operational	0	of	0

Equipment & Location		
No.	Fuel %	Location
Eimco:	B41	PANA
Eimco:		
Eimco:		
Drifty:		
Drifty:		
Pod Racker:		B
Mesh Jib:		B
Bucket:		B
Forks:		B
Pipe Trailer:		✓
Man Basket:		12

Critical Supplies	Location	% Remaining
1200 Chem		40
1400 Chem		40
Full Bolt Pods		0
Mesh Pod		60%
Tensar Mesh		10 METRES
Hydraulic Oil		20 DRUMS
Mega Bolt Pod		50 BARS
Pipe Hanging Brackets		2.
Escape Way Signs	PUD	
Spare Vent Tubes	B	
Borehole Kit	G&B	
Empty Bin		CRUD

Manning	
Miner Driver:	H. BOYDAN
Bolters:	D MARLSON, D SAYLOR, M HUBNER
Shuttle Car:	D MCMATHON
Outbye:	J. WILKINS, J. COLLINS
Trainee:	
Mechanical:	W. WAT N. WAT
Electrical:	C. WAGNE, M. FITZGERALD
Absent:	A. ELAN, J. NALDER

Critical information to pass on:
NEED BOLT PODS, PIPE BRACKETS, METAS
POD 2045, PUST FOR FAN.

	Mining Height	Tonstein to Floor RHS	Laser to Rib	
			L	R
SOS	3-8			C
EOS	3-8			C
	Hdg	C/T Ref	Chainage	SEQ
SOS	C	14	126	1
	C	14	140	1
EOS				

START	FINISH	METRES PLAN/ACTUAL	UPTIME	PRODUCTION DELAYS				REASON FOR VARIANCE	ACTION TAKEN/REQUIRED	Remember - Log the primary cause of delay...Why are we not cutting?	
				DOWNTIME	ACTIVITY CODE	DELAY CODE	PLANT & EQUIP CODE			Other Works Completed/During Delay	
0930	0940			10		1770		U/m TML			* NEED TO LOCATE FLIT CABLE FOR CM USE THROUGH CHS - CURRENTLY FLITING FROM C → B ON CHS, CABLE BOAT, THEN HAVE TO RECOVER BACK IN TO BOAT - SAME BUT REVERSE WHEN GOING BACK B → C A
0940	1005			25		1840		TRAVEL			
1005	1020			15		1770		T/BOAT/ACM TO FACE			
			70								
			60								
			50								- ADVANCED MIST SPRAY BLOCK TO B3
1305	1315			10		4370		BAT OFF - REPAIR RIP SWITCH AT BOAT			- RECOVERED ALL RUBBISH/GRADE 14H FOR FLIT.
			50								- RECOVERED AIR/WATER JUMMERS B3 & RAN TO NOSE REELER B14 FOR SEQ. 2
1345	1355			10		5510		CM DLOAD TO G&B - ALSO TO RESET			- PREP FOR FLIT
			60								- OPS BIN TO CRIBROOM
			60								
			25								
1655				35		1320		CM LISTED BACK TO 90m MARK FOR CLEANUP RUN.			
			25								
1755				35		1430		FLIT TO SEQ. 2. - REELER UP CM AIR/WATER - REMOVED - CM INTO B STUB. HAD TO REMOVE TUBES B14 CORNER TO GET CM AROUND - CABLE BACK INTO CHS BOAT, AFK01 STARTED, CABLE SERVICES RUN TO CM.			
			60								
			60								
			25								
2030				15		1320		LOADING OUT STW/SUP AT FACE/SLIP/TUBE IN.			
2045				45		1840		TRAVEL			

Totals	Metres	Uptime	Downtime	ERZC/Leading Hand	Oncoming ERZC/Leading Hand:
	14	375	345		
				Undermanager:	Process Coordinator:

Day	M	T	W	T	F	S	S
Shift	W	D	N				
Crew	A	B	C	D	E	F	

GROSVENOR MINE
Production Control Development

ERZC & LEADING HAND: **B. Eckman**
PANEL: **M/G 106 PDX**

DATE: **3, 5, 20**

26151

Mining Height	Tonstein to Floor RHS	Laser to Rib	
		L	R
SOS			
EOS			
Hdg	C/T Ref	Chainage	SEQ
SOS			
EOS			
Was Heading Dusted?		Yes	<input checked="" type="checkbox"/> No
Was Road Scooped?		Yes	<input checked="" type="checkbox"/> No
Was Miner Supplied?		<input checked="" type="checkbox"/> Yes	No

Contraband:			
Support Code:	Plan	Actual	Variance
TTFA		0655	
TTLA		1720	
Uptime			
Metres			
Metres/hour			
Work Orders Completed			
Electrical	1	of	1
Mechanical	1	of	1
Operational		of	

Equipment & Location		
No.	Fuel %	Location
Eimco:		
Eimco:		
Eimco:		
Drifty:		
Drifty:		
Pod Racker:		PANEL
Mesh Jib:		↓
Bucket:		
Forks:		
Pipe Trailer:		
Man Basket:		PANEL

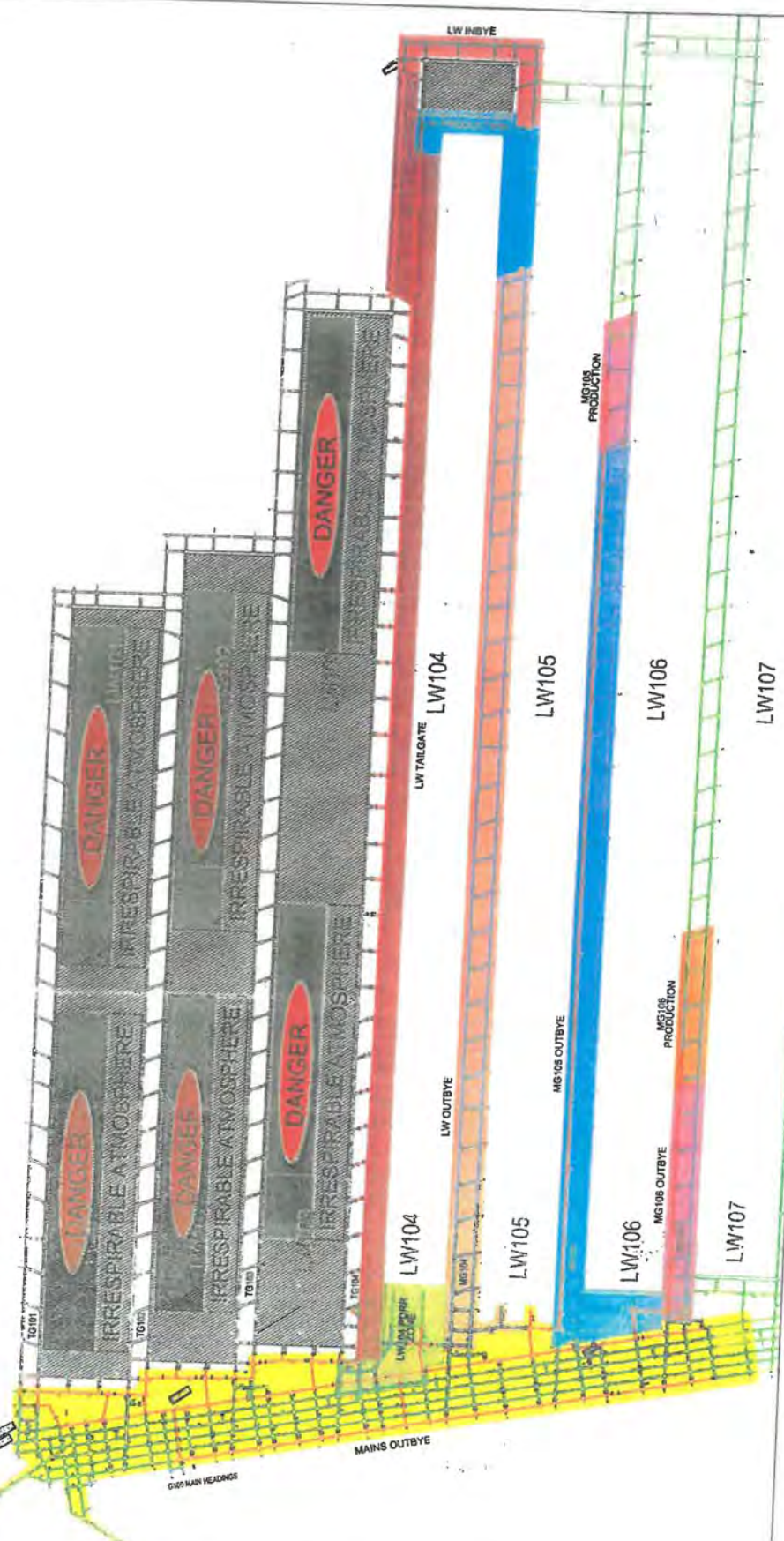
Critical Supplies	Location	% Remaining
1200 Chem		1/2
1400 Chem		1/2
Full Bolt Pods		-
Mesh Pod		30%
Tensar Mesh		4
Hydraulic Oil		> 15
Mega Bolt Pod		50%
Pipe Hanging Brackets		REQ.
Escape Way Signs		
Spare Vent Tubes		PANEL REQ.
Borehole Kit		REQ.
Empty Bin	CRIBBY	80

Manning	
Miner Driver: D. BOYLE	
Bolters: S. TAARE, B. KATENE	
Shuttle Car:	Mechanical: R. McDERMID, B. SCOTT
Outbye:	Electrical: S. RYAN, S. D'ARTU
Trainee:	Absent:
Critical information to pass on:	
* S/P BOLT POD, MEGGA POD REQ.	
* QDS DUSTER RE FILL REQ.	
* WING KEELS.	

START	FINISH	METRES PLAN/ACTUAL	UPTIME	PRODUCTION DELAYS				Remember - Log the primary cause of delay...Why are we not cutting?	
				DOWNTIME	ACTIVITY CODE	DELAY CODE	PLANT & EQUIP CODE	REASON FOR VARIANCE	ACTION TAKEN/REQUIRED
0600	0610			10				U/M S.O.S ADDRESS	
0610	0640			30				TRAVEL	
0640	0655			15				HANDOVER, T.B.T, A-Com	
0655	1130			275				- GROUT 72x MEGGA'S → FACE OVER C/M - SUPPLY C/M & RACK L/H POD ETC. - INSTAL B HDG FAN TUBE LINE FROM FAN → B HDG. - LHD 3103 SURF → PANEL WITH B/POD	
1130	1230			60				CRIB	
1230	1720							- RUNNING PALLET S/DUST → 3, 5, 7 & 9 - CLEAN O/B C/T'S 3, 5, 7, 9 & FILL P/B TO OVERFLOW. - LHD 3103 → SURF E.O.S - RECLAIM 22 x SNAP JACKS 3→9 C/T. ON GOING CLEAN UP STILL REQ.	
1720	1800			40				TRAVEL.	

Totals	Metres	Uptime	Downtime	ERZC/Leading Hand: [REDACTED]	Oncoming ERZC/Leading Hand:	Process Coordinator:	Work & Stat issue req attention:
---------------	--------	--------	----------	--------------------------------------	-----------------------------	----------------------	----------------------------------

SUPERVISOR D/S PLAN ACKNOWLEDGEMENT



- TAG BOARDS
 - ERZ INSPECTION BOARDS
 - DIESEL BOARDS
- DEPUTIES ZONES

UNDERMANAGER SIGN OFF:
 "BY SIGNING THIS PLAN I ACKNOWLEDGE ALL ERZ CONTROLLERS ON THE SHIFT UNDER MY CONTROL HAVE BEEN BRIEFED AND RECEIVED A PLAN ON THE ACTIVITIES PLANNED FOR THE ZONE ON MY SHIFT AND HAVE RECEIVED A WRITTEN PLAN OF THESE ACTIVITIES"
 NAME: [Redacted]
 SIGNATURE: [Redacted]

10/04/20 SHEET 1 OF 1
 AMG84 Z55 SCALE: NTS
 SHEET SIZE: A3

Supervisor's Shift Plan Acknowledgement

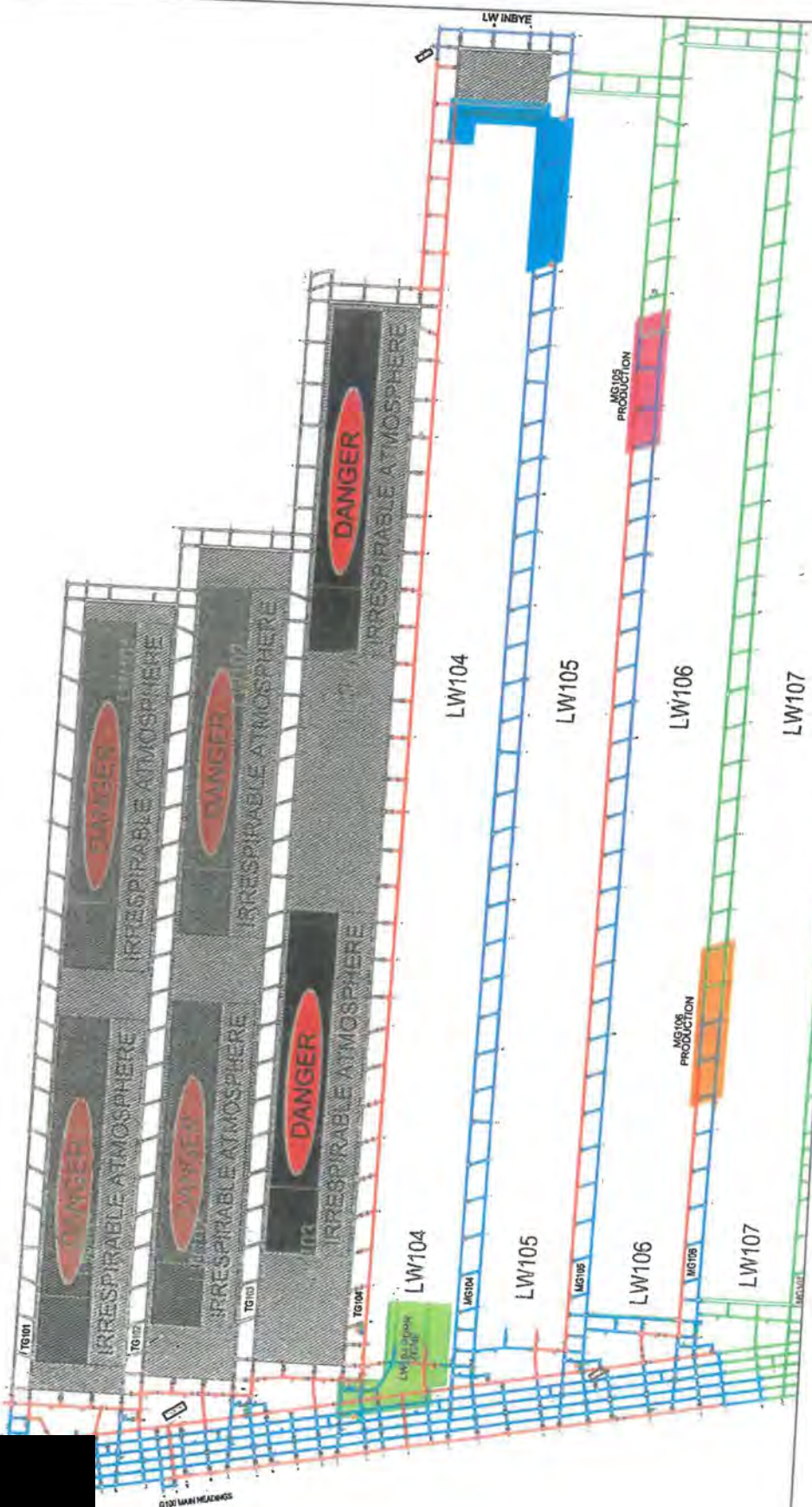
SUPERVISOR D/S PLAN ACKNOWLEDGEMENT

ZONE - MANS OUTBYE	NOTES
ERZ CONTROLLER SIGN OFF: "BY SIGNING THIS PLAN I ACKNOWLEDGE I HAVE BEEN ALLOCATED ZONE MANS OUTBYE. I ACKNOWLEDGE I HAVE BEEN BRIEFED ON THE ACTIVITIES PLANNED FOR THE ZONE ON MY SHIFT AND HAVE RECEIVED A WRITTEN PLAN OF THESE ACTIVITIES" NAME: <u>W. Jurich</u> SIGNATURE: [Redacted]	
ERZ CONTROLLER SIGN OFF: "BY SIGNING THIS PLAN I ACKNOWLEDGE I HAVE BEEN ALLOCATED ZONE MG103 INBYE. I ACKNOWLEDGE I HAVE BEEN BRIEFED ON THE ACTIVITIES PLANNED FOR THE ZONE ON MY SHIFT AND HAVE RECEIVED A WRITTEN PLAN OF THESE ACTIVITIES" NAME: <u>S. Dorso</u> SIGNATURE: [Redacted]	
ERZ CONTROLLER SIGN OFF: "BY SIGNING THIS PLAN I ACKNOWLEDGE I HAVE BEEN ALLOCATED ZONE LW103 PRODUCTION. I ACKNOWLEDGE I HAVE BEEN BRIEFED ON THE ACTIVITIES PLANNED FOR THE ZONE ON MY SHIFT AND HAVE RECEIVED A WRITTEN PLAN OF THESE ACTIVITIES" NAME: <u>C. Anderson</u> SIGNATURE: [Redacted]	
ERZ CONTROLLER SIGN OFF: "BY SIGNING THIS PLAN I ACKNOWLEDGE I HAVE BEEN ALLOCATED ZONE MG105 OUTBYE. I ACKNOWLEDGE I HAVE BEEN BRIEFED ON THE ACTIVITIES PLANNED FOR THE ZONE ON MY SHIFT AND HAVE RECEIVED A WRITTEN PLAN OF THESE ACTIVITIES" NAME: <u>T. Lawrence</u> SIGNATURE: [Redacted]	
ERZ CONTROLLER SIGN OFF: "BY SIGNING THIS PLAN I ACKNOWLEDGE I HAVE BEEN ALLOCATED ZONE MG105 OUTBYE. I ACKNOWLEDGE I HAVE BEEN BRIEFED ON THE ACTIVITIES PLANNED FOR THE ZONE ON MY SHIFT AND HAVE RECEIVED A WRITTEN PLAN OF THESE ACTIVITIES" NAME: <u>Arnan Bishtal</u> SIGNATURE: [Redacted]	
ERZ CONTROLLER SIGN OFF: "BY SIGNING THIS PLAN I ACKNOWLEDGE I HAVE BEEN ALLOCATED ZONE MG105 OUTBYE. I ACKNOWLEDGE I HAVE BEEN BRIEFED ON THE ACTIVITIES PLANNED FOR THE ZONE ON MY SHIFT AND HAVE RECEIVED A WRITTEN PLAN OF THESE ACTIVITIES" NAME: <u>R. Elery</u> SIGNATURE: [Redacted]	
ERZ CONTROLLER SIGN OFF: "BY SIGNING THIS PLAN I ACKNOWLEDGE I HAVE BEEN ALLOCATED ZONE MG105 PRODUCTION. I ACKNOWLEDGE I HAVE BEEN BRIEFED ON THE ACTIVITIES PLANNED FOR THE ZONE ON MY SHIFT AND HAVE RECEIVED A WRITTEN PLAN OF THESE ACTIVITIES" NAME: <u>M. P. P.</u> SIGNATURE: [Redacted]	
ERZ CONTROLLER SIGN OFF: "BY SIGNING THIS PLAN I ACKNOWLEDGE I HAVE BEEN ALLOCATED ZONE MG104 OUTBYE. I ACKNOWLEDGE I HAVE BEEN BRIEFED ON THE ACTIVITIES PLANNED FOR THE ZONE ON MY SHIFT AND HAVE RECEIVED A WRITTEN PLAN OF THESE ACTIVITIES" NAME: <u>A. Smith</u> SIGNATURE: [Redacted]	
ERZ CONTROLLER SIGN OFF: "BY SIGNING THIS PLAN I ACKNOWLEDGE I HAVE BEEN ALLOCATED ZONE MG104 INBYE. I ACKNOWLEDGE I HAVE BEEN BRIEFED ON THE ACTIVITIES PLANNED FOR THE ZONE ON MY SHIFT AND HAVE RECEIVED A WRITTEN PLAN OF THESE ACTIVITIES" NAME: <u>B. Egan</u> SIGNATURE: [Redacted]	
ERZ CONTROLLER SIGN OFF: "BY SIGNING THIS PLAN I ACKNOWLEDGE I HAVE BEEN ALLOCATED ZONE MG106 PRODUCTION. I ACKNOWLEDGE I HAVE BEEN BRIEFED ON THE ACTIVITIES PLANNED FOR THE ZONE ON MY SHIFT AND HAVE RECEIVED A WRITTEN PLAN OF THESE ACTIVITIES" NAME: <u>B. Egan</u> SIGNATURE: [Redacted]	

AngloAmerican Grosvenor Mine
 DRAWN BY: NAME, NIGEL DATE: 10/04/20 SHEET 1 OF 1
 DRAWING NUMBER: 10008 DATUM: AMG84 Z55 SCALE: NTS
 XREFS: 10001 SHEET SIZE: A3

Supervisor's Shift Plan Acknowledgement

SUPERVISOR A/S PLAN ACKNOWLEDGEMENT



- TAG BOARDS
- ERZ INSPECTION BOARDS
- DIESEL BOARDS

DEPUTIES ZONES

UNDERMANAGER SIGN OFF:
 "BY SIGNING THIS PLAN I ACKNOWLEDGE ALL ERZ CONTROLLERS ON THE SHIFT UNDER MY CONTROL HAVE BEEN BRIEFED AND RECEIVED A PLAN ON THE PLANNED ACTIVITIES FOR THE ZONE ON MY SHIFT AND HAVE RECEIVED A WRITTEN PLAN OF THESE ACTIVITIES"

NAME: [REDACTED]

SIGNATURE: [REDACTED]

DRAWN BY: ME
 DRAWING NUMBER: 10008
 REFS: 10001

Supervisor's Shift Plan Acknowledgement

SUPERVISOR A/S PLAN ACKNOWLEDGEMENT

ZONE - LW PRODUCTION

ERZ CONTROLLER SIGN OFF:
 "BY SIGNING THIS PLAN I ACKNOWLEDGE I HAVE BEEN ALLOCATED ZONE LW103 PRODUCTION. I ACKNOWLEDGE I HAVE BEEN BRIEFED ON THE ACTIVITIES PLANNED FOR THE ZONE ON MY SHIFT AND HAVE RECEIVED A WRITTEN PLAN OF THESE ACTIVITIES"

NAME: *A.M. Maggs* SIGNATURE: [REDACTED]

NOTES

ZONE - LW104 PDRR PRODUCTION

ERZ CONTROLLER SIGN OFF:
 "BY SIGNING THIS PLAN I ACKNOWLEDGE I HAVE BEEN ALLOCATED ZONE LW103 PRODUCTION. I ACKNOWLEDGE I HAVE BEEN BRIEFED ON THE ACTIVITIES PLANNED FOR THE ZONE ON MY SHIFT AND HAVE RECEIVED A WRITTEN PLAN OF THESE ACTIVITIES"

NAME: *B. Schmidt* SIGNATURE: [REDACTED]

NOTES

ZONE - MG105 PRODUCTION

ERZ CONTROLLER SIGN OFF:
 "BY SIGNING THIS PLAN I ACKNOWLEDGE I HAVE BEEN ALLOCATED ZONE MG105 PRODUCTION. I ACKNOWLEDGE I HAVE BEEN BRIEFED ON THE ACTIVITIES PLANNED FOR THE ZONE ON MY SHIFT AND HAVE RECEIVED A WRITTEN PLAN OF THESE ACTIVITIES"

NAME: *P. Irwin* SIGNATURE: [REDACTED]

NOTES

ZONE - MG106 PRODUCTION

ERZ CONTROLLER SIGN OFF:
 "BY SIGNING THIS PLAN I ACKNOWLEDGE I HAVE BEEN ALLOCATED ZONE MG106 PRODUCTION. I ACKNOWLEDGE I HAVE BEEN BRIEFED ON THE ACTIVITIES PLANNED FOR THE ZONE ON MY SHIFT AND HAVE RECEIVED A WRITTEN PLAN OF THESE ACTIVITIES"

NAME: *C. [REDACTED]* SIGNATURE: [REDACTED]

NOTES

AngloAmerican Grosvenor Mine	
DRAWN BY: NEAME, NGEL	DATE: 10/04/20 SHEET 1 OF 1
DRAWING NUMBER: 10008	DATE: AMG84 255 SCALE: NTS
REFS: 10001	SHEET SIZE: A3

Supervisor's Shift Plan Acknowledgement